

- GPS SOS Phone Watch
- Analogue or digital watch face
- Voice calls outgoing & incoming
- Google Map live location
- Location update schedule
- 4G Network SIM
- SOS / Alert numbers call sequence
- Auto answer incoming calls
- Fall alert with sensitivity settings
- Low battery alert
- Magnetic cable for charging
- Heart rate measurement
- Blood Pressure measurement
- Oxygen saturation measurement
- Temperature thermometer
- Pedometer - calories, distance, steps, turnover in bed
- Camera
- Phone book
- Alarm clock
- Sedentary alert
- Geo-fence for leaving or arriving
- History tracking
- Alternate App - Video call, messaging, medication reminder



Smart  
mag charge



Remote monitoring by family or carers for location, SOS or Fall alert, low battery, leaving / arriving, History & Geo-fences

Remote settings for SOS alert phone numbers, phone book, alarm clock

### Coolum Specifications

Colour	Black
Strap	20mm Leather, Silicone
GPS antenna	high sensitivity ceramic
GSM Antenna	FPC
Battery	680mAh up to 36hrs battery life
Network	LTE FDD: B1 B2 B3 B4 B5 B7 B8 B12(17) B20 B28A
GPRS	Class 12
GPS signals	L1,1575.42MHz C/A code
GPS channels	20 channels
GPS position accuracy	5-15m
Base station accuracy	100-1000m
Minimum standby current	<0.5 mA
Average standby current	<2.5 mA
Average working current	<55 mA
Temperature	-20 70°C
Humidity	5% to %95, no condensation
Certification	CE, ROHS, FCC
Supported	Auto date/time, Touch screen, Mic, speaker, battery replacement service, splash proof
App Support	Android & iOS Aibeile Plus / Smartsense gps
Size & Weight	45 x 40 x 15mm, 49g
Accessories	USB charger & magnetic charger cable, user guide

*Any resulting measurements from steps, turnover in sleep, heart rate / blood pressure, oxygen saturation and body temperature. are not intended for medical use and are not medically certified.*

### GPS+WIFI 10 location ways

Know where the parents are from the APP.

Support GPS+LBS+WIFI multi location ways. Locate accurately, upload data rapidly. Can check the parents' location from the APP.

Geo fence      History track

### SOS emergency help

Will alarm when fall down, parents can Hold the turn on button for SOS.

When the senior meet accident, can hold press SOS button to contact family members. Watch will Circular dial the bound number till family answer the call. Provide the real-time safety guard.

### Real-time blood pressure monitor

Real-time tracking, intelligent calculation, accurate monitoring of blood pressure changes

Blood pressure monitor

086/160 mmHg

### 24 hours heart rate monitoring

The health status can be seen directly

Intelligently calculate, monitor heart rate real time

Heart rate sensor

Monitor heart rate and BP real time

90bpm      140bpm

### Can be used to locate the position, and test the temperature too

Based on before HD call and accurate location, add a new temperature test function. We use a brand customized probe, which can be test temperature rapidly and accurately.

### Temperature Test

With customized brand temperature probe, to test easy and rapidly. Just need to press "start to measuring" on temp interface on the watch. The result will display directly, and it support remote temperature test on APP by parents.

Forehead mode      Wrist mode      Test remotely

### More Functions

- Temp
- Heart rate
- BP and Blood oxygen
- Video call
- IP67 waterproof
- 4G
- Flashlight
- SOS
- 2-way call
- HD camera
- Voice chat
- Pedometer
- Remote turn off
- Geo fence
- Fall down detection
- Sedentary
- History track
- Long standby time
- Alarm clock
- Remote monitor

### 4G elderly smart watch

GPS Phone Watch with thermometer, heart rate and Blood pressure

4G network Video call IP67 waterproof

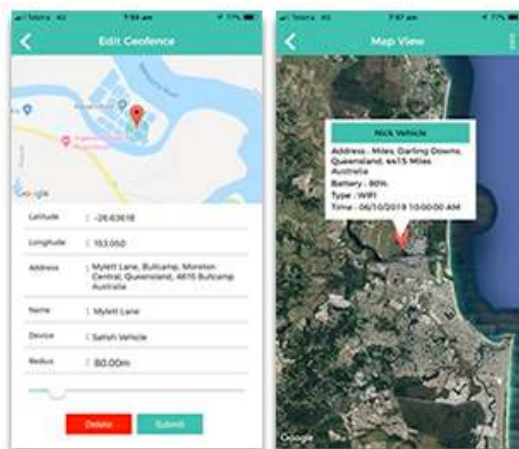
### Pedometer

Do more exercise, be healthier

By Pedometer function to feedback the exercise effect. Remind the seniors to do exercise, help them to be healthier

- Temperature test
- Heart rate Blood pressure
- Blood oxygen
- 10 location ways

- **GPS SOS Phone Watch**  
Coolum watch is a compact GPS positioning, cellular phone with SOS / fall alerts and functions as a watch
- **Voice calls outgoing & incoming**  
Voice calls can be made by pressing the SOS button or using the watch key pad or phone book to select a number  
Calls to the watch can be set to answer automatically or blocked
- **Google Map live location**  
GPS functionality within the watch uses satellites to fix a position and send co-ordinates to the App or in an SMS to locate the live position on Google Maps
- **Location update schedule**  
Location update settings provide for different schedules for live location update. Updates only occur on movement  
Default update schedule is 3 minutes
- **4G Network SIM**  
Voice, SMS, data and notifications are sent through the 4G cellular SIM card to the App and to family / carers phones  
There are a number of SIM options - Pay as you go or prepaid 365 day SIM plans offer best value but you are required to monitor your credit usage - normal credit usage \$40 per annum
- **SOS / Alert numbers call sequence**  
Settings provide for up to five family or carers phone numbers to be automatically called in the event of an SOS or Fall alert.  
If the first number is not answered in 12 seconds, the second number is called etc. The call sequence can be set to loop once  
When the call is answered the wearer communicates with family / carers. At the same time, family / carers are sent a phone notification and / or SMS alerting them to the SOS. Family / carers can then call the watch if they missed the SOS calls
- **Auto answer incoming calls**  
Coolum watch can be set to auto answer incoming calls so the wearer does not have to push any buttons.  
Other than family / carers calls can be blocked
- **Fall alert with sensitivity settings**  
Coolum watch contains sensors to detect a fall although being worn on the wrist can lead to false positives. There are sensitivity settings in the watch from less sensitive to most sensitive. Smartsense does not guarantee that all falls will be detected
- **Low battery alert**  
When the watch battery is near 15% an alert notification is sent to family / carers phones. Normal battery use is from 20 to 30 hours
- **Magnetic cable for charging**  
Coolum watch provides a USB magnetic charging cable and USB charger to charge the pendant nightly for 2 to 3 hours.
- **Pedometer, heart rate, blood pressure, oxygen saturation and temperature measurement**  
Coolum watch contains sensors to measure steps, heart rate, blood pressure, oxygen saturation and temperature. These measurements can be initiated from the watch or remotely from the App. Any resulting measurements are not intended for medical use and are not medically certified.
- **Torch light / Camera**  
Coolum watch has a torch light on the side above the push button and can be turned on / off from the watch settings  
Coolum watch has a built in camera to take & store surrounding photos
- **Phone book**  
Coolum watch phonebook provides a list of family / carers names & phone numbers. Calls can be initiated from this list
- **Alarm clock**  
Alarm settings with days / times can be set in the App and sent to the watch
- **Sedentary alert**  
Sedentary alerts can be set in the watch and sent to the watch to remind wearer to move about
- **Strap Retainer**  
Can include strap retainer to make it difficult to remove strap
- **Geo-fence for leaving or arriving**  
Geo fence or virtual fence allows for entry or leaving alert to / from a particular area usually around the wearers residence.  
Usually the virtual fence is more than 100m in diameter. When location update schedule is set to 3minutes, family / carers receive a notification alert when the boundary is crossed
- **History tracking**  
Smartsense App provides history map reporting for any GPS location positions between set hours / days. The App also shows live GPS location positions as the wearer walks about and allows set up of geo-fences



## Smartsense owned & developed GPS Android & iOS App

All of our products come with our own Smartsense GPS App  
Designed and built by our Smartsense team with family & carers in mind.  
Works on Android & iOS smartphones. See live locations, set zones and receive alerts  
We also offer an alternate function rich app, Aibeile Plus

## Features List

- Simple app based location monitoring for clients & family members at risk
- SOS and Fall alert notifications on smart phones
- Add an unlimited number of clients in the one interface
- Multiple family members can access on their own smart phones
- The platform is hardware agnostic - we can link newly sourced devices to the platform
- Real-time tracking 24/7
  - See the most recent GPS location on the smart phone app
  - Follow the route taken by the client
  - Display GPS co-ordinates for emergency response
  - Display date / time and address of location
  - Show device battery level
- Real-time Alerts
  - Set multiple authorised phone contact for Voice, SMS text and Notification alerts
  - Receive SOS and fall alerts with voice call-back
  - Set Geo-fence boundaries to receive alerts on leaving or arriving
- Map Location History
  - Look up past history for walking or wandering locations
  - Search by date & time for specific events
- Data History
  - Managers can look up raw data history by device and date / time
- Google Map Features
  - Use native Google Map features such as street and satellite view
  - Zoom in and out for greater clarity
- Editing
  - Update user account name, password, email address & street address. Managers can add or update all information in the App
  - Update for daylight saving time
- Platforms
  - App download for Apple and Android smart phones. Managers have access to web administration for adding clients & devices
- Commands
  - Send SMS text commands to the device for increasing location reporting, adding or deleting authorised numbers, status, setting alarm clock. Managers can send GPRS commands